

Accessing PowerChart via ONE Network Gateway

New ONE® ID Account?

If you just received your ONE® ID credentials after your Local Registration Authority (LRA) has completed your registration and enrolment, you will need to Self-Complete your account.

For detailed instructions on how to self-complete, please refer to the [ONE® ID Registrant Reference Guide](#).

Existing ONE® ID Account?

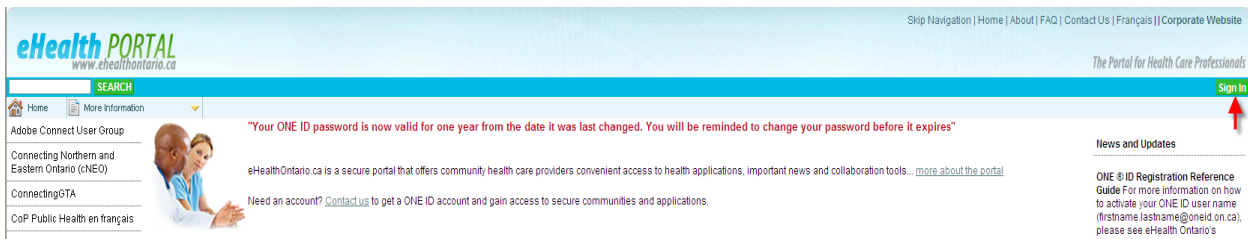
If you already have the service enrolment on your existing ONE® ID account, you may use your existing ONE® ID username and password to login, as per the steps below.

This guide represents the set-up required to access the Mount Sinai Hospital (MSH) Cerner PowerChart application using Internet Explorer 9/10 on a Windows 7 PC with administrative privileges on the computer.

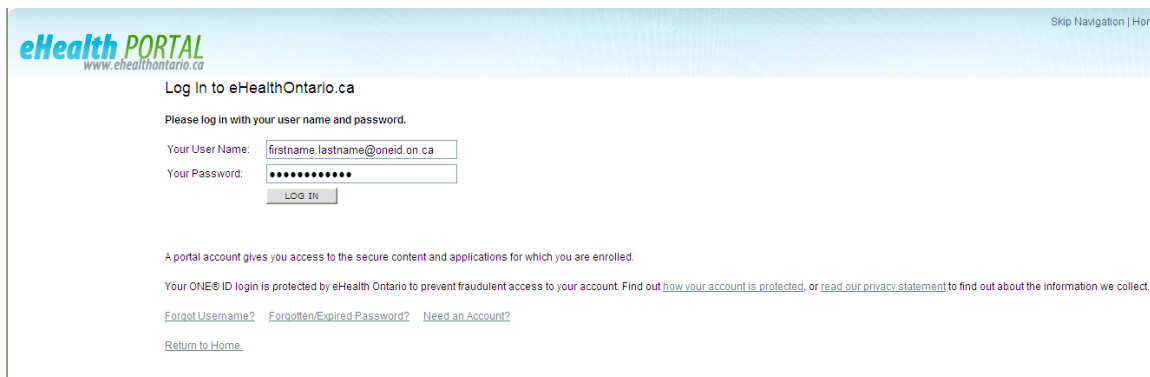
Using ONE® Network Gateway to Access PowerChart

The ONE® Network Gateway is a web-based Virtual Private Network (VPN). To use ONE® Network Gateway to access the PowerChart application, follow these steps:

1. In your browser, go to the *eHealth Ontario Portal*: <https://www.ehealthontario.ca> and click **Sign In**.

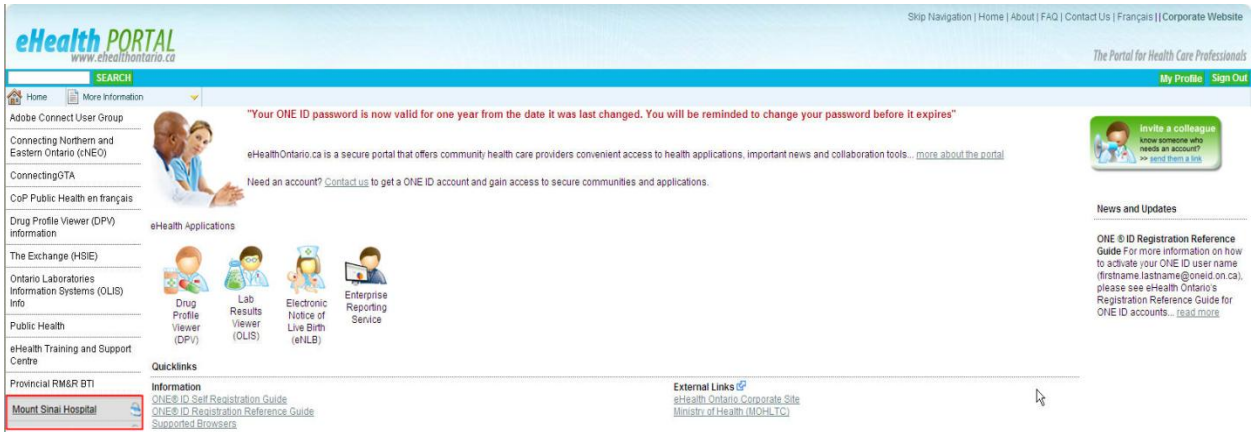


2. Enter your ONE® ID Username and Password. Click **Log In**.

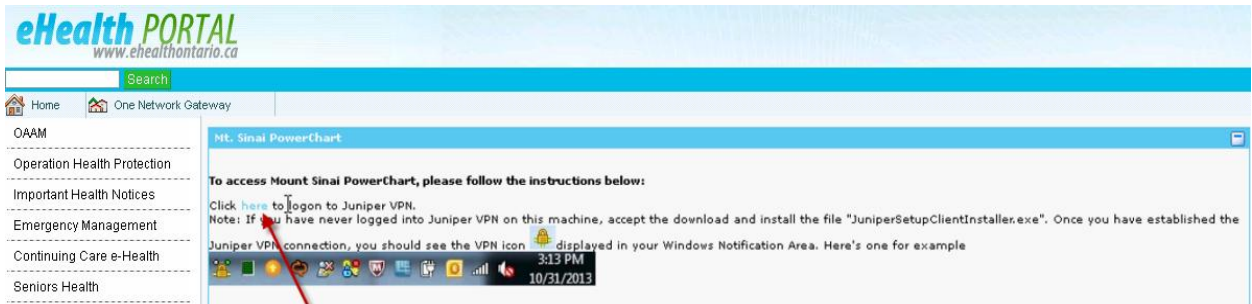


Accessing PowerChart via ONE Network Gateway

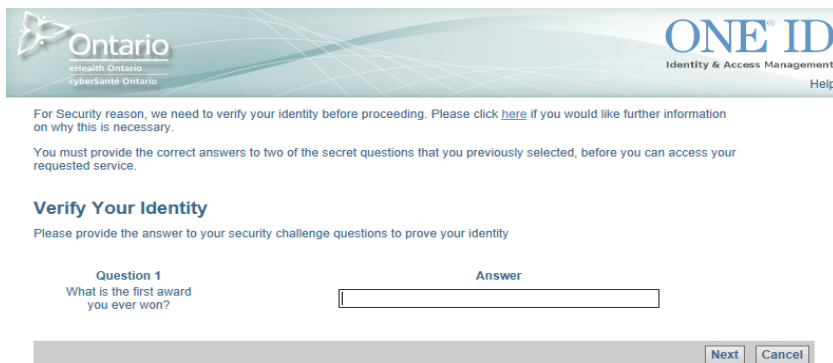
- After successful authentication, the **Mount Sinai Hospital** community link will be displayed on the left.



- Select the **Mount Sinai Hospital** community and click the link to connect to Juniper VPN.

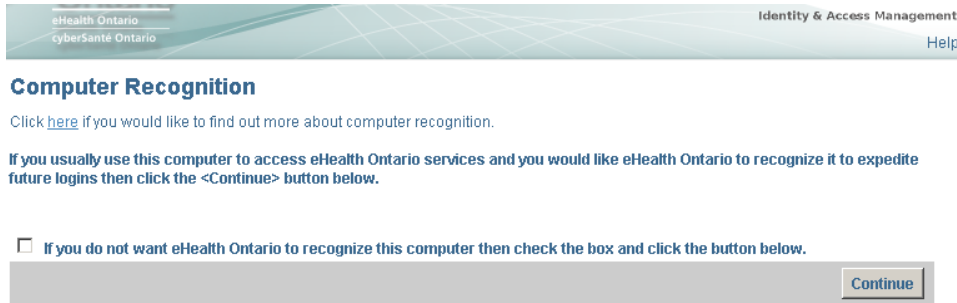


- You will be prompted to answer 2 Challenge Questions to verify your identity. Provide your answer, and then click **Next**.

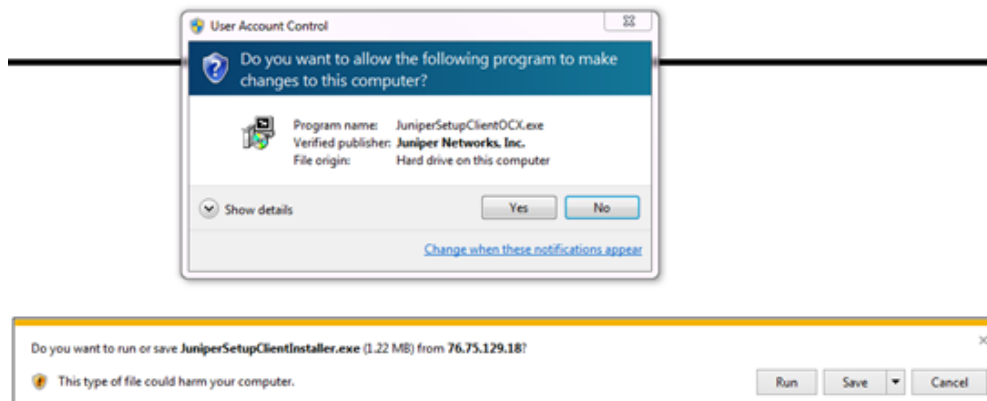


Accessing PowerChart via ONE Network Gateway

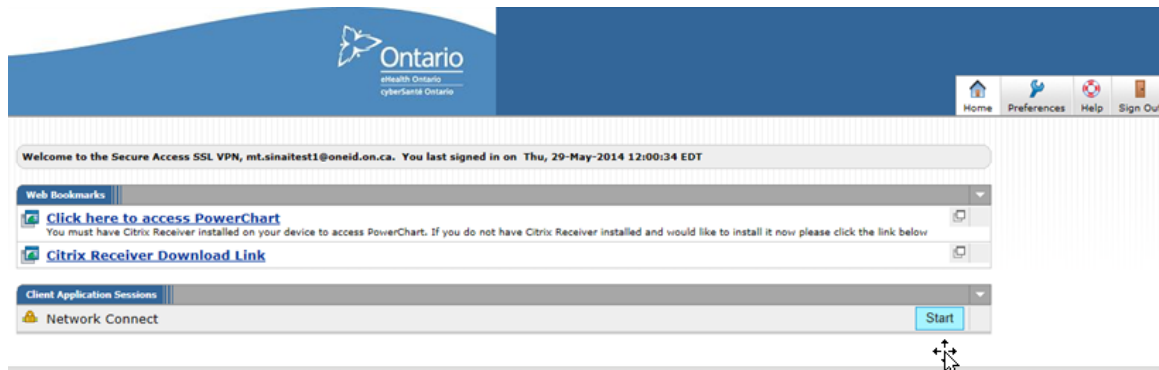
- You may choose to recognize your machine to expedite future logins. Click **Continue** to proceed.



- Once authenticated, follow the onscreen instructions to download and install the Juniper Client (if this is your first time logging into Juniper VPN on your machine). Click **Yes** and/or **Run** for the prompts that follow.



- Once completed, click **Start** to launch the Network Connection.



Accessing PowerChart via ONE Network Gateway

9. If this is your first time logging on, you will see the following:



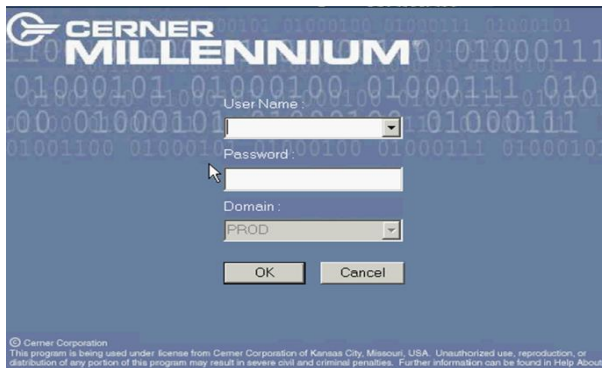
10. You must have Citrix Receiver installed on your machine. Click the **Citrix Receiver Download Link** and follow the onscreen instructions to download and install the Citrix Receiver file. Click **Yes** and/or **Run** for the prompts that follow.



11. Once you have Citrix Receiver installed, click the “**Click here to access PowerChart**” link to proceed and install the Citrix ICA file. Click **Open** and/or **Save**.



12. Enter your MSH PowerChart credentials. Click **OK**.



Need Help?

For assistance with accessing, logging in, or navigating within ONE® Network Gateway, please contact MSH Project Manager, Patricia Moreno, at 416-586-4800 Ext. 4119 or pmoreno@mtsinai.on.ca